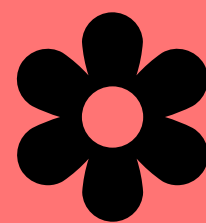


CURRIMUNDI CATCHMENT NEWS

Welcome to our community newsletter

Voluntarily produced by Currimundi Catchment Care Group Inc (ABN 77 276 084 092), this newsletter is printed on sustainable forest paper and distributed to 12,000 households and businesses within the Currimundi Catchment. **Can you help deliver newsletters four times a year? Please phone Tony on 0435 375 450.**



Spring
2025

Proudly
supported by
 Sunshine Coast
COUNCIL

THE CHANGING FACE OF OUR REGION



ABOVE LEFT: An artist's impression of the Maroochydore City Centre masterplan and RIGHT: The Wave, a heavy passenger rail line from Beerwah to Birtinya, connecting with a metrobus-style service to the Sunshine Coast Airport via Mountain Creek and Maroochydore CBD.

Anyone who has lived on the Sunshine Coast for longer than five years knows the region has undergone massive and rapid change.

As populations grow and new developments increase, so too it seems have the traffic jams, hospital wait times, crime rates, cost-of-living pressures and stresses on our environment.

Many locals are questioning if our health, education, road and public transport networks are coping or ready for more... If we have adequate services, community facilities and infrastructure to support families, businesses, the vulnerable and sustainable future growth.

What is being done to improve housing availability and affordability or strengthen our region's climate and marine resilience to keep our precious environment protected and thriving for generations to come?

In short, what's the plan to keep our region a great place to live, and do we get a say in it?

A new planning scheme

Sunshine Coast Council has proposed a new planning scheme to replace the current one.



It includes many new and updated measures to guide development decisions, including some controversial proposed rezoning to increase building height limits in Currimundi and along the Nicklin Way, and new areas of low- and medium-density residential zones in Caloundra, Aroona, Battery Hill, Currimundi and Golden Beach.

Council's rationale is to ensure enough land is set aside for homes, green spaces, community facilities and business, while planning for a climate-resilient future.

Feedback previously gathered has informed the proposed scheme, with council hearing at the time that "protecting our natural environment, maintaining our unique character and addressing public transport, traffic and parking, improving development

outcomes and housing affordability are all important".

Have your say before 19 September

Council is now seeking additional feedback from the community to finalise the planning scheme.

Hundreds of people attended three separate community forums held in August and public submissions can be made online right up until midnight on Friday 19 September.

Visit haveyoursay.sunshinecoast.qld.gov.au/newplanningscheme

The Wave is coming

We are poised for yet more significant change to transform the way our region looks, feels and grows over the next decade and in the lead-up to the 2032 Brisbane Olympic and Paralympic Games.

The Wave is a multi-billion-dollar heavy passenger rail line from Beerwah to Birtinya which will connect with metrobus-style services to the airport via the Maroochydore CBD, which is also undergoing a transformation of its own.

Continued page two.

SHAPING A GREAT PLACE FOR ALL OF US



The Wave Stage 1 will include:

- a new dual-track rail line (and associated infrastructure, including one upgraded station and two new stations) from Beerwah to Caloundra
- planning, design and market engagement to confirm costs and timeframes to deliver the rail line to Birtinya
- protection of the revised alignment.

The Wave Stage 2 will include:

- an additional 7km dual-track rail line (and associated infrastructure, including two new stations and approximately 1km tunnel) from Caloundra to Birtinya – including Birtinya station, *above*, which will be situated on Station Road, at the end of The Avenue, behind the Stockland Birtinya shops.

The Wave Stage 3 includes the Sunshine Coast Metro from Birtinya to the airport.

Site investigations are underway now and will continue until February 2026. They include land, environmental and cultural heritage surveys, geotechnical drilling and underground utility identification.

Go online – have your say – keep informed

THE WAVE

<https://www.yoursay-projects.tmr.qld.gov.au/thewaverail>

SUNSHINE COAST COUNCIL PLANNING SCHEME

haveyoursay.sunshinecoast.qld.gov.au/newplanningscheme

Transport and Main Roads is asking people to add their knowledge of the local environment to an interactive map for potential inclusion in the environmental approval process for The Wave. Visit the link above to find the map, and add your comment before consultation closes on 19 October 2025.

Meanwhile, Council's Honey Farm Sports and Recreation Precinct was one of two major projects to be fast-tracked for delivery earlier this year with the injection of federal funding. The \$13.6 million Stage 1 includes sporting fields and ovals for soccer and cricket, hardcourt activities, skateboarding and disc golf.

The site, opposite Corbould Park Racecourse, will also feature playgrounds, nature trails, wetlands, dog-friendly areas and spaces for community events.



ABOVE: A scene from Council's planning scheme video.
RIGHT: The Honey Farm Road Sports & Recreation Precinct plan.



SEND IN YOUR BEST PICS FOR OUR 2026 CALENDAR



It's that time of year again! Time for all the photographers in our beautiful catchment to get out and get clicking.

Last year Russell's Strachan's picture of a Great Egret in full breeding plumage was a real stunner and made the cover of the 2025 calendar (see left). We can't wait to see your photographs of the Currimundi Catchment for the 2026 Wall Calendar competition. It's a wonderful opportunity to showcase the birdlife, wildflowers, beaches, lake and creeks that make up our beautiful backyard.

You can find the technical requirements on the CCCG website at <https://cg.currimundicatchment.org.au/portfolio>. The key things to remember are: **A4 size, landscape orientation and high resolution** (at least 1 MB).

Email your images to calendar@currimundicatchment.org.au
Entries close 10 October 2025.

A SPECIAL DAY FOR THE ENVIRONMENT

Coming to the annual World Environment Day (WED) event organised by Currimundi Catchment Care Group (CCCG) in early June was doubly beneficial for Emily Anderson, a student at Pacific Lutheran College.

Apart from experiencing first-hand the successful re-establishment of a vibrant Wallum ecosystem over previously cleared land for cattle grazing through community tree planting efforts, she won the raffle: a family pass for Emily and her parents Raelene and Jeffrey to go to Sea Life at Mooloolaba.

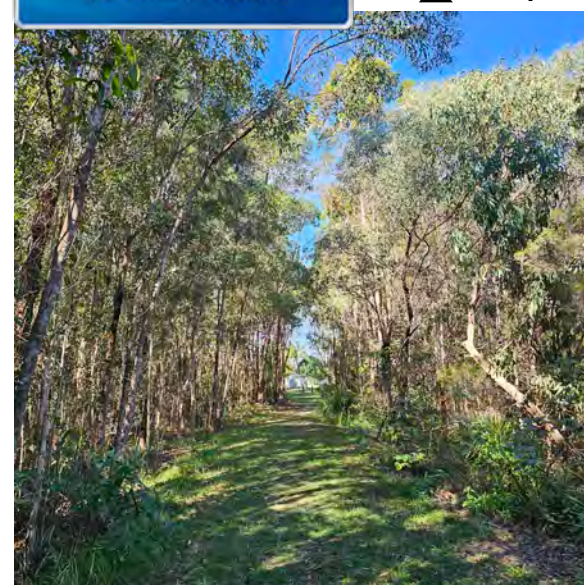
All the people who enjoyed the glorious clear winter's day at Bancroft's Red Gum Environment Reserve at Meridan Plains took home native seedlings from the Mooloolah River Landcare nursery, as well as useful information about some of the native plants now growing in this restored ecosystem.

Knowledge was also shared about how First Nations people use the different parts of many of the plants.

CCCG would like to thank Sea Life Sunshine Coast for the great prize and members of the Wildlife Preservation Society of Queensland for sharing some of their rich knowledge.



ABOVE: Winner of the family pass to Sea Life, Emily Anderson, with mum Raelene and dad Jeffrey. Thanks for spending WED with us!



CHANCE TO WIN A \$30 GIFT CARD

We've launched a quick and easy reader survey which features the chance to win a prize. And we'd really love your feedback.

Firstly, thanks for reading Currimundi Catchment News – your quarterly community update on the precious natural environment in our backyard.

We're keen to know what you think of this newsletter, what stories you love, what you'd like to see more of and whether you'd consider sharing your own photos or nature stories with us down the track.

Your input helps shape future editions, making sure whatever we produce for our community stays interesting, relevant and inspiring.

The survey only takes a few minutes. Enter your email address to go in the draw to win a \$30 gift card.

The winner will be randomly chosen from completed entries – so be sure to leave your name and contact details at the end if you'd like to be in the running.

Thanks for helping us protect, connect and celebrate the Currimundi Catchment.

Scan the QR code or visit bit.ly/CCCGSurvey



FIRE ANTS? REPORT THEM



Residents are reminded to be on the lookout for fire ants following seven recent nest detections on the Sunshine Coast. Winter is the best time to spot these invasive pests because they build their nests higher to stay warm. Fire ant nests look like mounds or flat patches of loose soil with no clear access holes. Fire ants are aggressive and will swarm when their nest is disturbed. They are copper brown in colour and have a darker abdomen. They can vary in size from 2 – 6 mm within the same nest. Fire ants can travel in materials such as soil, hay, mulch, manure, quarry materials, turf and potted plants.

Fire ants are pests that can cause serious social, economic and environmental damage.

Eradicating fire ants requires a whole-of-community approach. Everyone can:

- look for and report fire ants
- allow specialists access to your property to conduct eradication activities
- learn how they spread and do what you can to prevent the spread.

More information

Call **132 ANT (13 22 68)** or visit fireants.org.au to report fire ants (even if you're not sure), see the fire ant map, learn how to stop the spread and understand the treatment process.

LEFT: Fire ants are small and extremely hard to spot, and yet they can do serious damage. Photo courtesy National Fire Ant Eradication Program. Locally, signs indicating that fire ants have been identified are currently on Edmondson St Moffat Beach, outside Currimundi Primary School and on Parklands Boulevard.

Group reports

CURRIMUNDI CATCHMENT CARE GROUP

We are excited about the forthcoming community tree planting event we are hosting with Sunshine Coast Council at the new Honey Farm Rd environmental reserve (details end of this page). Bring your family and friends or come along by yourself. It will be fun and interesting to see the work that is being done to restore this once-degraded cattle grazing land into a thriving natural area the whole community will be able to share and enjoy.

I encourage all our readers to complete the online reader survey in this edition (see links page three). Many hours of volunteer effort go into the production and distribution of this newsletter. Over 50 volunteers walk the streets of their neighbourhood to deliver each edition to your letterbox. We would love to hear what you like about the newsletter, how we can improve and what you would like to see in future editions. Thank you to all the volunteers involved. We also thank the Sunshine Coast Council for their financial assistance to print the newsletter.

Entries are now open for this year's Currimundi Catchment Wall Calendar (see page two). We love to see the hundreds of photos submitted each year highlighting what you love about the wonderful place we live. You don't have to be an expert photographer, just pick anything within our neighbourhood that means something to you and share it with us. **Tony, President**

FRIENDS OF CURRIMUNDI LAKE

Ruth has been a busy lady with our Bushcare days. We were lucky to have the Kabi Kabi Rangers visit us last working bee. There is so much they can do to enrich our knowledge of native plants and native habitat. All plants, both weeds and natives, beside the lake pathway have grown so much. A Madeira Vine (*Anredera cordifolia*) just near Hargreaves Street had returned which it had been doing for at least 10 years. It only takes one small warty tuber to drop to the ground and reproduce. These are from South America. The Lake has been doing its preordained job of closing and creating problems in the canals.

It is almost time for the baby "pups" of the largest flying mammal – the Flying Fox – to be born. These little babies are suckled for about six months. The Flying Fox plays a vital role in plant pollination and seed dispersal in our rain forests. The flying fox is a vegetarian, can live up to 23 years and has a wingspan up to 1.6 metres. They can fly up to 40kms per hour! Currimundi is derived from the Indigenous name given to the flying fox.

The year is flying by with time coming for the turtles to be arriving on our beaches, then Lights on the Lake, then school holidays and Christmas. Our next general meeting will be on 7 October at the Currimundi Community Hall at 7.30pm. Take care everyone. **Rhondda, President**

PARKLANDS COMMUNITY GROUP

The Parklands community is rolling along at our regular pace. The swans have had a two-offspring family and disappeared; walking over to Ivaldale Lakes, we suspect, but have not checked. If anyone can confirm the presence of a new family, two parents and two cygnets growing into their feathers!!

The best thing we can confirm is the new grass cutters doing a cleaner/tidier job with no clumps of cutting left behind. Thanks Council for making the change! Tim Burns our Div 3 rep is on site at the Parkland shops meeting our residents on a monthly basis: Tuesday 9 September and 6 October from 2pm to 4pm. Join his email list for Council updates and follow him on Facebook at www.facebook.com/CrTimBurns/

I'm looking for more deliverers who would like a walk four times a year to deliver these newsletters in a small patch of your neighbourhood. Please give me a call on 0448 517 905 if you feel up to the task or have other things to contribute to the community. **Ron, President**

NEWS BITES

TREE PLANTING – SATURDAY 4 OCTOBER: Why not spend a fun few hours on the last weekend of the school holidays planting up our local environment? The Honey Farm Road Environment Reserve Community Planting event is on Saturday 4 October from 9am – 10.30am. All the necessary tools and equipment are provided, along with a free sausage sizzle afterwards (vegetarian options too). Bring water, hat and sunscreen to this family-friendly event.

More information and free ticket registration here: HoneyFarmRdCommunityPlanting.eventbrite.com.au

SIGN UP TO RECEIVE OUR NEWS:

You can sign up for our eBulletin either on our website or via the QR code to receive updates in your inbox about tree planting, weeding bees, group meetings and more.



Handy contacts

CURRIMUNDI CATCHMENT CARE GROUP

Meetings: Kawana Forest Meeting Place, 160 Woodland Blvd Meridan Plains, on the second Monday of every odd month. Next meeting: 7pm, 10 November 2025. Contact: President Tony, 0435 375 450, cccginfo@currimundicatchment.org.au

FRIENDS OF CURRIMUNDI LAKE

Meetings: Currimundi Community Hall (cnr Currimundi Rd & Ilya St) first Tuesday of every even month.

Next meeting: 7.30pm, 7 October 2025

Contact: President Rhondda 5437 6481, focinfo@currimundicatchment.org.au
Working bees: Ruth 0408 989 263

PARKLANDS COMMUNITY GROUP

Contact: Ron 5491 7905, 0448 517 905, rburnett@bigpond.net.au

KAWANA FOREST RESIDENTS' ASSOCIATION

Contact: President Glenn 0412 286 156, htimsg60@gmail.com
Website: www.kafr.org.au
Meeting Place hire: 1300 786 227

OTHER CONTACTS

Sunshine Coast Council: 5475 7272 for issues regarding Currimundi Lake and its catchment.

Kawana Police: 5413 8700

Policelink: 131 444

Queensland Boating & Fisheries Patrol: 5444 4599 to report speeding boats.

TurtleCare: 0437 559 067 to report turtle tracks or nests.

Dept of Environment & Resource Management DERM: 1300 130 372 to report spills, dumping or anything suspicious in our waterways OR 1300 264 625 to report wildlife emergencies, including sick, injured or distressed marine life.

Wilvos: 5441 6200 24-hour hotline for injured wildlife.

Fishwatch Hotline: 1800 017 116 unlawful fishing activities.

Australia Zoo Wildlife Hospital: 1800 334 350