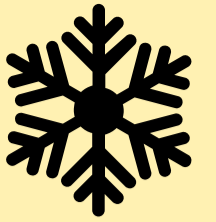
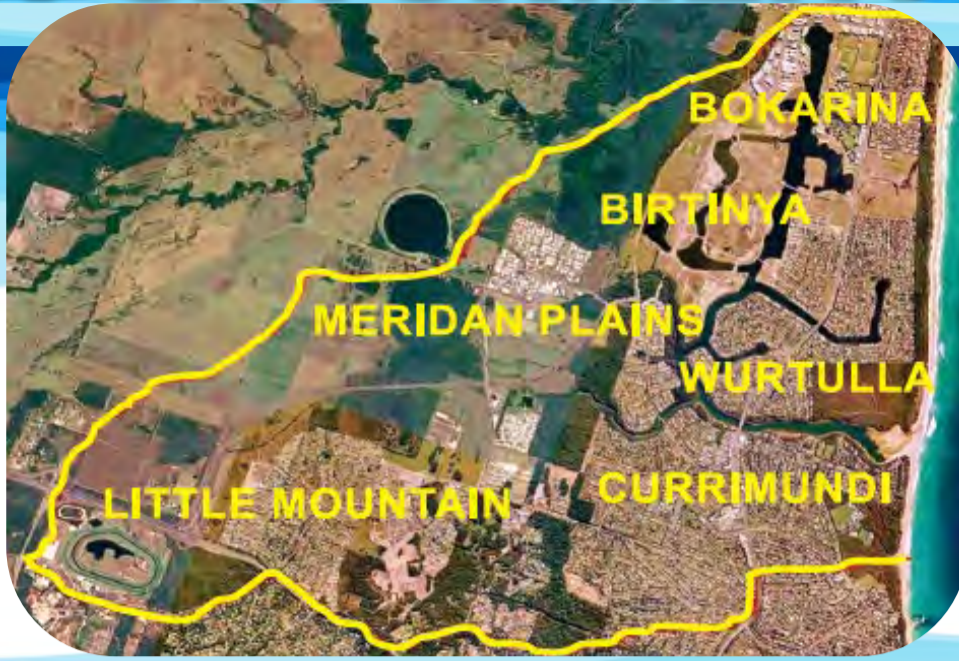


CURRIMUNDI CATCHMENT NEWS



Winter
2024

Proudly
supported by
 Sunshine Coast
COUNCIL



Welcome to our community newsletter.

Voluntarily produced by Currimundi Catchment Care Group Inc (ABN 77 276 084 092), this newsletter is printed on sustainable forest paper and distributed to 12,000 households and businesses within the Currimundi Catchment. Can you help deliver newsletters four times a year? Please phone Tony on 0435 375 450.



BIODIVERSITY IN OUR BACKYARD

By *Fergus FitzGerald*

Who would imagine how many different species of animals occur in the grasslands west of the Kawana Link Road, right on our doorstep?

This area was once wallum forest and heathland but was cleared for cattle grazing early last century. It forms part of the Mooloolah River flood plains.

The Sunshine Coast Council has been acquiring private land in the area over the past few years, as part of its plan to maintain an inter-urban break with green space. The land abuts the Mooloolah River National Park, which protects valuable remnants of coastal lowland habitat. Council plans to develop some parts as sport and recreation precincts (earthworks got underway in May), other blocks will be used for conservation purposes through habitat restoration and protection of existing riparian vegetation along the Mooloolah River.

As part of the detailed assessment of the area, council ecologists surveyed the flora and fauna over the Honey Farm Road parcel that was acquired 2021. The surveys used a variety of monitoring techniques, including Elliott traps, funnel and pitfall traps, camera traps, song meters and direct observation. The surveys occurred during Spring 2022 and Autumn 2023.

Despite the apparent degraded and weedy condition of the former grazing grassland, officers were surprised at the species diversity.



ABOVE: Grey-Headed Flying Foxes. Photo: City of Adelaide.

BELOW: Yellow-Footed Antechinus. Photo: iNaturalist

BELOW LEFT: Short-Beaked Echidna. Photo: Bush Heritage Australia



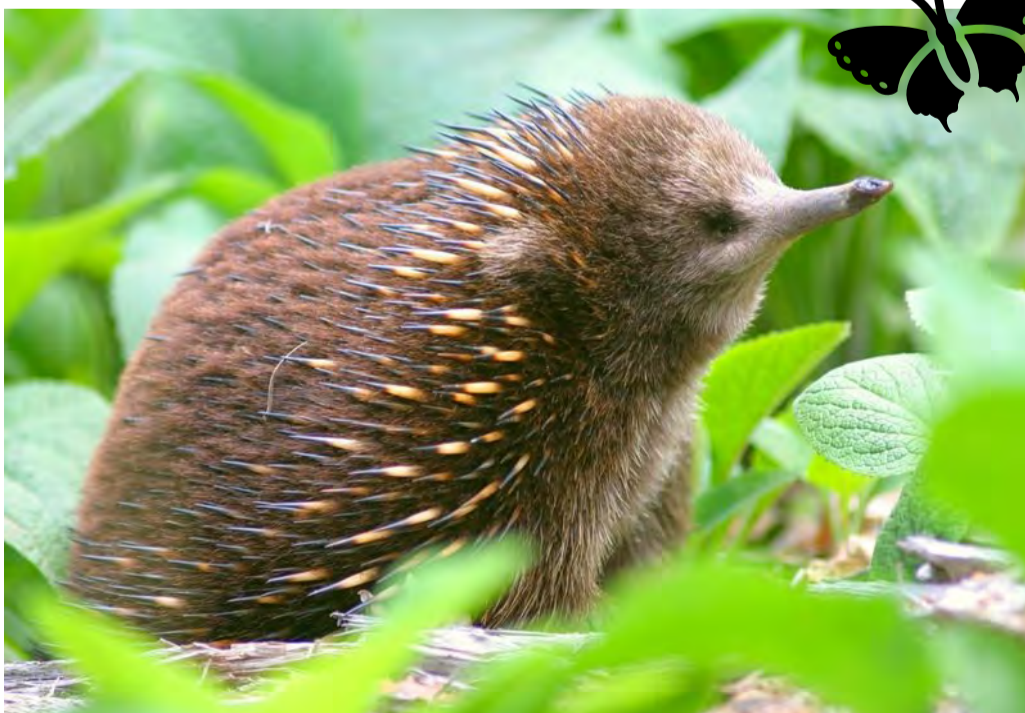
A total of 30 native mammal species were identified. This included the Grey-Headed Flying Fox (*Pteropus poliocephalus*), listed as vulnerable under federal and state conservation legislation.

Fourteen other species of bats were identified, along with six species of marsupial and the delightful Yellow-Footed Antechinus (*Antechinus flavipes*) and Short-Beaked Echidna (*Tachyglossus aculeatus*).

Other important animal families included nine reptile species, three native frog species and 21 bird species.

The proximity to a narrow section of remnant rainforest along the Mooloolah River is undoubtedly an important contributor to this rich diversity.

Continued over page



LOCAL EVENTS TO BOOST OUR BIODIVERSITY



COMMUNITY TREE-PLANTING

Last year council began restoration of the Honey Farm Road block with a community tree-planting event, in partnership with Currimundi Catchment Care Group volunteers. Three similar tree planting events are planned for June this year. One **in the morning of Wednesday 26 June** will be a community tree-planting in partnership with CCCG again.

All tools and equipment will be provided, as well as guidance on how to plant the seedlings to ensure a high rate of survival.

Being in the school holidays, we're hoping to see some family groups join in this fun and productive activity. As an added incentive, there will be a guided bird walk led by a council expert and a free sausage sizzle.

We hope to plant 1000 seedlings at this event, which will build on a total of 1300 seedlings planted in conjunction with the Glass House Mountains State School and Pacific Lutheran College projects earlier in the month. >>> **Please register at honeyfarmplanting2024.eventbrite.com.au**



WORLD ENVIRONMENT DAY

A wonderful example of ecosystem restoration through community tree-planting efforts will be on display this year as part of the World Environment Day events coordinated by the Sunshine Coast Environment Council in June.

CCCG will be hosting a self-guided walk through the Bancroft's Red Gum Environment Reserve on **Sunday 9 June from 10am – 12 noon**. Come and see how the area, which was previously cattle grazing land, was progressively restored over nine years and the planting of 18,000 native seedlings of self-sustaining paperbark and banksia wallum.

Volunteers from CCCG and Wildlife Preservation Society of Queensland will be on hand to share information about the species of plants and animals now in the area. You could win a family pass to Sea Life Sunshine Coast just by completing a simple questionnaire based on information at the displays. There will also be a free sausage sizzle and cold drinks. >>> **Please register at tinyurl.com/kwkv5chf**

LOCAL LAKE TALK WITH TALARA

Currimundi Catchment Care Group was invited to talk at a Talara Primary College Year 5 field excursion at Crummunda Park, Wurtulla. The students are studying a new local community-based subject with a focus on Currimundi Lake and its environment.

Tony, Bev, Janet and Mick from CCCG talked with the students about water and land care issues, our role in helping protect the local environment and how we work in partnership with other groups such as Sunshine Coast Council, National Parks & Wildlife Service, local community groups and the community within our catchment to preserve and improve our precious neighbourhood.



About 150 students walked from school to the park and spent the morning learning and conducting science-based projects.

Did you know?

Talara Primary College's Year 5 Science Unit, Coast to Coast, is a newly developed unit that takes an integrated approach to learning. It combines various key curriculum subjects such as Design Technology, Science, English and Humanities and Social Science.

Read more in our next newsletter.



COAST'S SHIFTING SANDS

Having moved to Caloundra in 1970, Gary O'Donnell has a treasure trove of memories of our local coastal environment.

He was 12 years old when his parents bought the Moffat Beach Newsagency (*pictured right*) and moved up north from Victoria. His dad was a champion lifesaver at Torquay and, like a chip off the old block, Gary got straight into surfing and swimming as soon as his feet first touched those shimmering Queensland sands. Currimundi was always the go-to surfing spot for Gary, who these days is a life member of the WindanSea Boardriders Club.

"Currimundi has changed dramatically over the years as development reached the northern side of the lake," he said.

"Especially when Creekside was developed and the canals on the northern side at Wurtulla were joined to Currimundi Lake.

"Council now has to make sure that the lake doesn't fill up too much, as the water levels will inundate the low-lying areas of Creekside. The entrance to the ocean has to be kept open a lot of the time and silt build-up within the lake has been an issue ever since.

"The sand dunes have been modified at the entrance by bulldozer to keep it flowing on the northern side where the coffee rock is, and the deep area behind the dunes has been

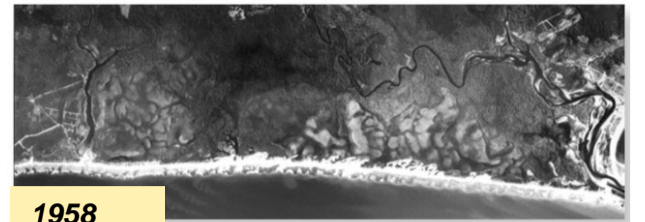


filled up with sand, causing sandflies to breed. We never experienced sandflies before (development) occurred at Currimundi. We would often have parties at the boat ramp on Westway Parade before it was developed. It was all bush there on both sides of the lake; we would water ski and nobody was around.

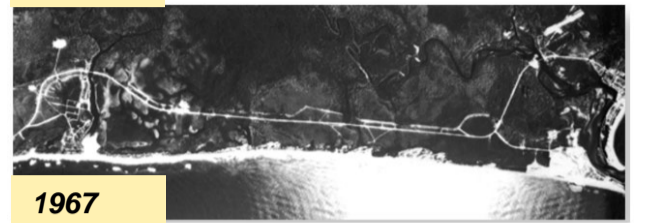
"The lake has deteriorated over the years with bank wash and destruction of habitat. The reserve on the northern side is fantastic, we used to drive through it on a sand track till it was fenced and housing was built."

Still a keen surfer, Gary said the marine life was also different now, most notably turtle numbers. "There were always turtles surfacing for air at all Caloundra breaks, especially some real big ones at Moffat. They'd surface right next to you and let a big gasp out, scaring the life out of you. The whales come in a lot closer now, but not in the 70s, as they were still hunting them until 1978. And we never thought much about sharks until Jaws came out in 1975 – and then we thought about them.

"We are still lucky though. Caloundra has some of the most beautiful beaches in Queensland. I have noticed that Currimundi is being over-loved and as more people find this beautiful area, the bigger the buildings that have come with it – and then more people. I hope our future generations keep Currimundi clean and enjoy its beauty."



1958



1967



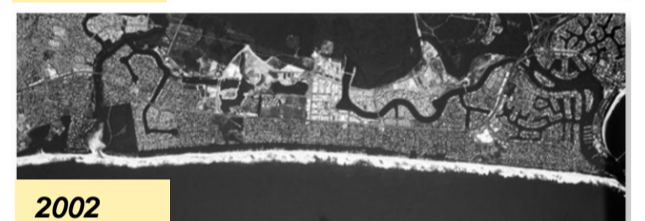
1972



1981



1991



2002



2024

Coastline from Currimundi Lake to Pt Cartwright. Photos: Picture Sunshine Coast and Google



Darryl Parkinson surfing Currimundi (spot the feet). Photo: Geoff Nunquam

SLOW DOWN TO SAVE OUR NATIVE NEIGHBOURS

By Glenys Powell

I wrote an article for the Currimundi Catchment newsletter in 2020 about how much I enjoyed coming across this group of kangaroos while doing my round of delivering newsletters in Little Mountain.

I also reported on a research project where the council had begun installing "virtual fencing" which consisted of green posts along the roadside that carry equipment that can be activated by headlights at night. Once activated, a device emits a combination of sound and light stimuli that alerts and repels animals from the roadside. The virtual fence was installed on large sections of Sugarbag Road and Sunset Drive where we know there are frequent movements of kangaroos.

We don't know the results of this research, however on two occasions during deliveries of



the newsletter last year I had the unhappy task of phoning council to alert them to a dead kangaroo on the roadside. Both were in the area of the virtual fencing.

We are all witness to the fact that Caloundra has become a city plagued by increasing traffic.

We can't rely on virtual fencing to save our native animals.

Let's all try to slow down so that we can continue to live with our kangaroo neighbours for years to come.

Group reports

CURRIMUNDI CATCHMENT CARE GROUP

The constant showers we have received lately have kept our working bee weeders busy trying to get on top of invasive weeds which thrive in this weather. It can seem like a daunting task at times, but it is always satisfying seeing a small group of volunteers make a real difference after one of our monthly outings. It's also fun, believe it or not, with such a friendly group all working towards a common goal.

We are looking forward to a couple of exciting events coming soon. We will be joining with Sunshine Coast Council for another community planting event at Honey Farm Road Environmental Reserve and we will also host an event to celebrate World Environment Day at Bancroft's Red Gum Reserve in Little Mountain. Both events will take place in June. See more details in this newsletter. You can also subscribe to receive our eBulletin emails to receive notifications of our coming events. Sign up on the home page of our website www.cg.currimundicatchment.org.au

It was a great thrill to address a class of Talara Primary College students during their field excursion to Crummunda Park recently. It was wonderful to see how excited and enthusiastic the kids were to learn how they can help protect and understand more about the environment in their local community. The future is in good hands.

Tony, President

FRIENDS OF CURRIMUNDI LAKE

The cooler weather is arriving, the Easter Cassia looks very cheerful (weed), and most of us are praying for some beautiful sunny days. Ruth has had Friends of Currimundi Lake pulling weeds out, but I am sure the weeds are smarter than us because they wait until we turn away, then bingo, they wave to us as they shoot to great heights behind us. Seriously, it is a good time to care for our lovely coastal pathway with weeding and planting and picking up litter as it is cooler and most of the plants will be slowing down.

FOCL will have two new teardrop banners, so when you see them, you will know we are working for your suburb. You are always welcome to join in by talking to Ruth or myself. If you are interested in doing one of our Climate Trails, please let either Fergus from the Currimundi Catchment Care Group or myself know as I hope to be back on board within the next six weeks. These Trails cover birds, insects, reptiles and plants of our area. I have not been able to check our Lake for some time as I have been confined to barracks, but hopefully we will be able to hold a Steering Committee in July sometime. If you have any comments, please feel free to ring, text or email me with your comments. Finally, welcome to our new Councillor Tim Burns. Look forward to meeting up with you, Tim.

Rhonda, President

PARKLANDS COMMUNITY GROUP

Parklands Community Group have weathered the WET and now with a few days of good sunshine, we are barracking for more! Our community is out and about enjoying the weather, looking for the wildlife to return and the grass cutters to roll through. Anyone with special requests should jump on the council website and add them to the list. We welcome our new Councillor Tim Burns and encourage him to join his constituents in some future meetings in early June and late November or early December. I would be pleased to provide my patio early some mornings. I'll make the arrangements and give everyone plenty of notice, just bring some questions for our new representative.

A meeting would also be a good time for a transition of my role, for someone who would like to stand up for the neighbourhood. We are almost totally built out, we've got our roads working pretty well and are just waiting for the rail connection to the rest of the Sunshine Coast. Thinking of stepping up, delivering some newsletters and bringing direction to our community? Please give me a bell on 0448 517 905 or email rburnett@bigpond.net.au

Ron, President

NEWS BITE

Great turnout at our May working bee to remove invasive weeds near Lilac Parade. Next event is at Noel Burns Park on 8 June. Working bees are held on the second Saturday of the month, 2.30 – 4.30pm, all welcome! For all the details, please go to cg.currimundicatchment.org.au/events/

QUOTABLE QUOTE

"Some people say that I should study to become a climate scientist so that I can 'solve the climate crisis'. But the climate crisis has already been solved. We already have all the facts and solutions. All we have to do is to wake up and change."

– Greta Thunberg

Handy contacts

CURRIMUNDI CATCHMENT CARE GROUP

Meetings: Kawana Forest Meeting Place, 160 Woodlands Blvd Meridan Plains on the second Monday of every odd month.
Next meeting: 7pm, 8 July
Contact: President Tony, 0435 375 450, email cccginfo@currimundicatchment.org.au

FRIENDS OF CURRIMUNDI LAKE

Meetings: Currimundi Community Hall (cnr Currimundi Rd & Ilya St) first Tuesday of every even month.
Next meeting: 7.30pm, 4 June
Contact: President Rhonda 5437 6481, email foclinfo@currimundicatchment.org.au
Working bees: Ruth 0408 989 263
focl.currimundicatchment.org.au/calendar

PARKLANDS COMMUNITY GROUP

Contact: Ron 5491 7905, 0448 517 905, rburnett@bigpond.net.au

KAWANA FOREST RESIDENTS' ASSOCIATION

Contact: President Glenn 0412 286 156, htimsg60@gmail.com
Website: www.kafra.org.au
Meeting Place hire: 1300 786 227

OTHER CONTACTS

Sunshine Coast Council: 5475 7272

Kawana Police: 5413 8700

Policelink: 131 444

Queensland Boating & Fisheries Patrol: 5444 4599

TurtleCare: 0437 559 067

Dept of Environment & Resource Management DERM: 1300 130 372 to report spills, dumping or anything suspicious in our waterways OR 1300 264 625 to report wildlife emergencies, including sick, injured or distressed marine life.

Wilvos: 5441 6200 24-hour hotline for injured wildlife.

Fishwatch Hotline: 1800 017 116 unlawful fishing activities.

Australia Zoo Wildlife Hospital: 1800 334 350